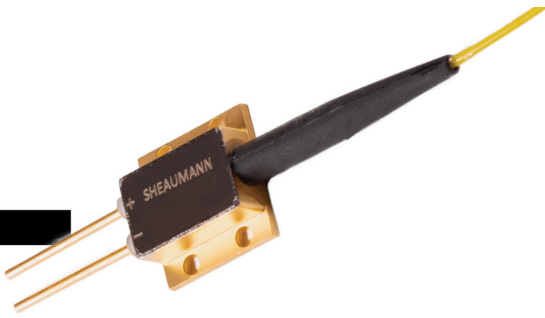
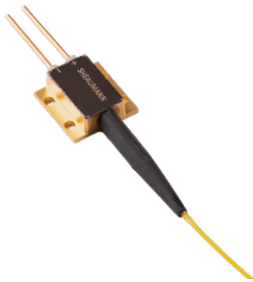


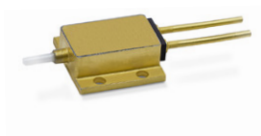
2-Pin



Series



SP

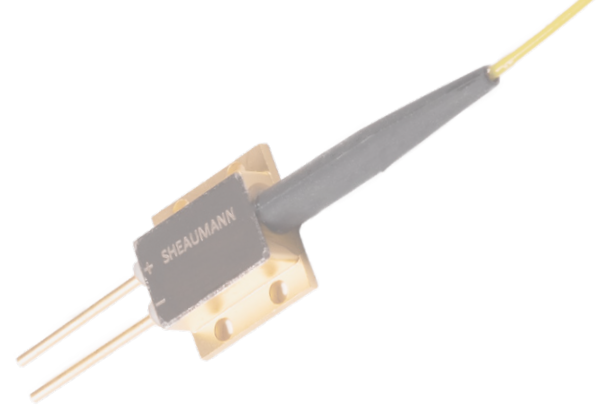


SNP

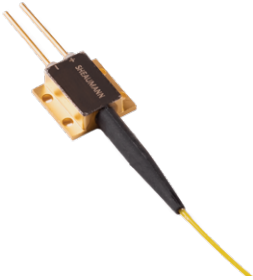
Sheumann's 2-Pin module is electrically isolated, hermetically sealed, and passively cooled. 2-Pin modules are an ideal solution for high-power output in a compact, lightweight package. They are capable of both continuous wave and pulsed operation. Our proprietary design enables the diode to withstand extreme temperature and vibration conditions, making it well suited for space, defense, and industrial markets. Wavelength emission range 780-1070nm. Various fiber-coupled options are available.



2-Pin SHEAUPAC



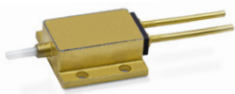
SP



Wavelength emission range 780-1070nm

CATEGORY	SPECIFICATIONS
Dimensions	12.7mm L x 12.7mm W x 4.7mm H
Multimode Power	Up to 7W
Emitter Options	50/125-105/125-200/220µm

SNP



CATEGORY	SPECIFICATIONS
Dimensions	12.7mm L x 12.7mm W x 4.7mm H
Multimode Power	Up to 7W
Emitter Options	50/125-105/125µm