

Ultra Compact and Narrow Line-width U Series Lasers

MxL-U series laser with the characteristics of narrow spectrum line-width, single longitudinal mode, are ideal for use in DNA sequencing, flow cytometry, digital imaging, analytical chemistry, particle measurements, confocal microscopy, Raman Spectroscopy and many other applications. Housed in ultra compact packages, these lasers are the perfect choice for OEM instrumentation, system design and integration, and also for end user applications in research and application.



◆ Parameter

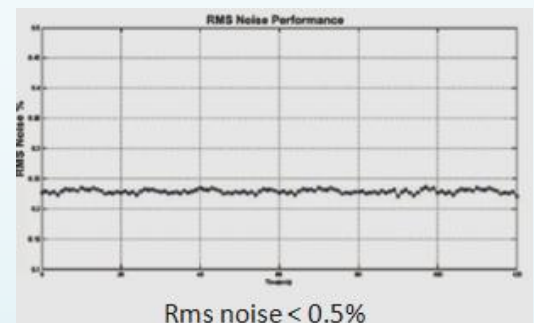
Wavelength	Output power	Transverse mode	Power stability	Beam quality	Polarization Ratio	Spectrum line width
457 nm	1-400mW	TEM ₀₀	3%, 5%, 10%	M ² <1.5	>100:1	<0.003 nm
473 nm	1-300mW	TEM ₀₀	1%, 3%, 5%	M ² <1.2	>100:1	<0.003 nm
532 nm	1-1500mW	TEM ₀₀	1%, 3%, 5%	M ² <1.2	>100:1	<0.003 nm
561 nm	1-200mW	TEM ₀₀	1%, 3%, 5%	M ² <1.2	>100:1	<0.003 nm
589 nm	1-200mW	TEM ₀₀	3%, 5%, 10%	M ² <1.2	>100:1	<0.003 nm
671 nm	1-500mW	TEM ₀₀	1%, 3%, 5%	M ² <1.2	>100:1	<0.003 nm
1047 nm	1-500mW	TEM ₀₀	1%, 3%, 5%	M ² <1.2	>100:1	<0.003 nm

Note: Single frequency lasers are optional, and you can get the other wavelengths from www.cnllaser.com

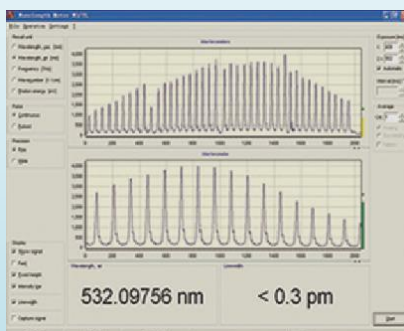
◆ Features of MxL-U series laser



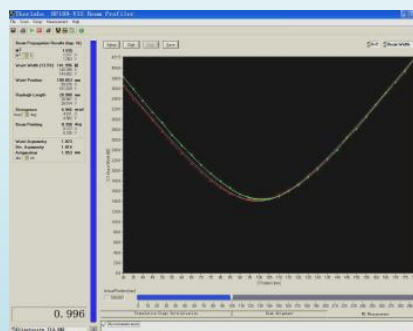
Long term output power stability



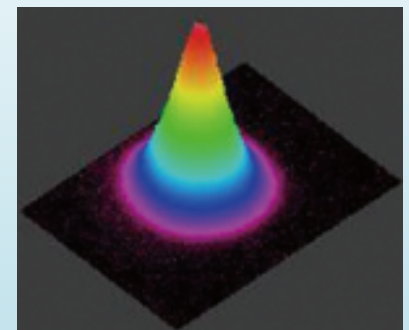
Rms noise < 0.5%



Line-width measurement



M² measurement <1.2



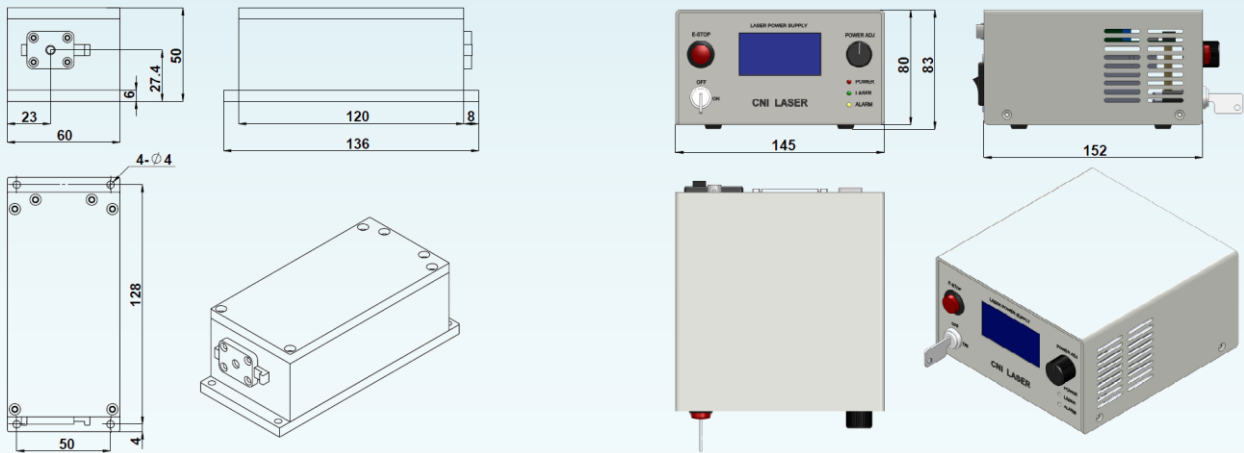
Beam profile(TEM₀₀)

◆ Customized solutions:

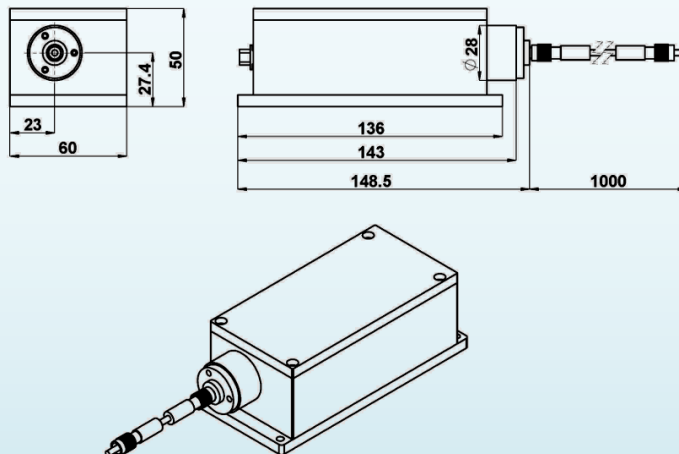
- Fiber coupling
- External AOM
- Isolator
- Mechanical shutter
- Line generator
- Other customized design is also available on request.



◆ Dimensions of laser and power supply (mm):



◆ Dimensions of fiber coupled laser head(mm):



CNI LASER: Complete solution for laser Technology!

Founded in 1996, CNI (CHANGCHUN NEW INDUSTRIES), is the leading supplier of lasers, spectrometers, power meters and optical systems in China. CNI products are ISO-9001, CE, RoHS certified. CNI offers a diverse of products for a broad range of commercial and scientific applications.