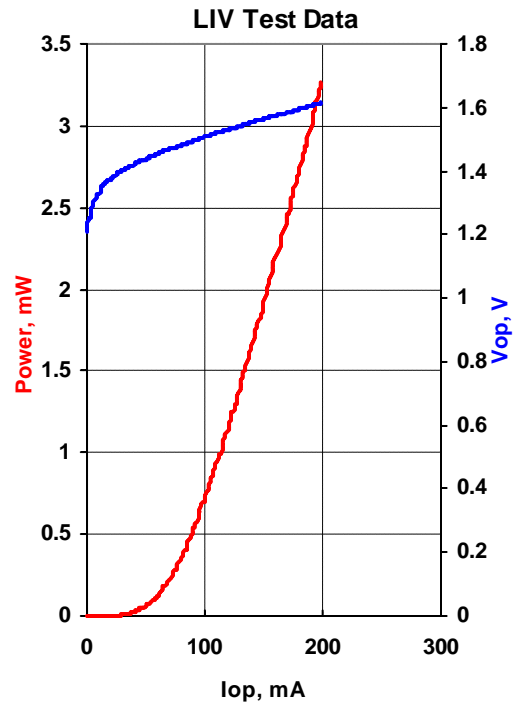


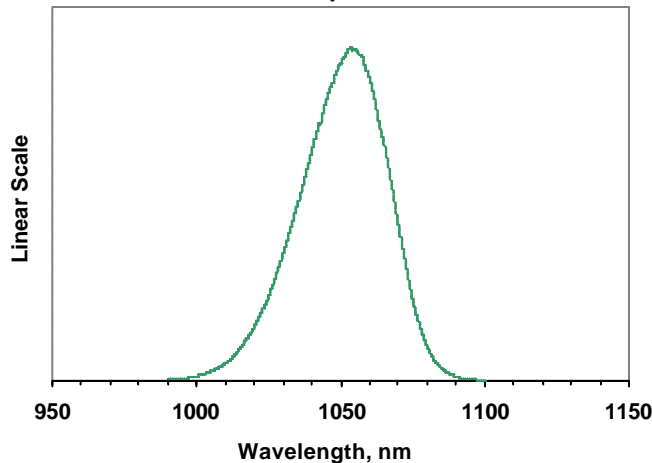


MODEL	QSDM-1050-2
PART NUMBER	SAMPLE

Parameter	Value	Units
Internal Temperature	25	°C
Thermistor Resistance	10.0	k?
Optical Output Power	1.5	mW
Threshold Current	-	mA
Operating Current	133	mA
Operating Voltage	1.55	V
Monitor Current	0.15	mA
Monitor Dark Current	0	nA
Center Wavelength	1049.9	nm
Spectral Width @ 1nm resolu	35.13	nm
Ripples @ 0.2 nm resolu	3	%

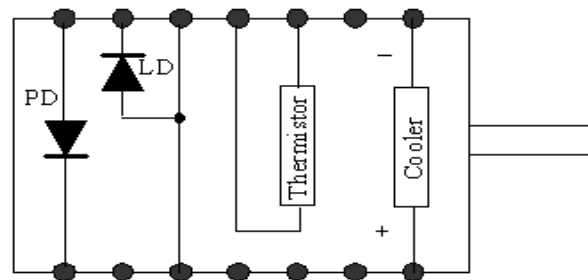


Emission Spectrum



Fiber Type	HI1060
NA	0.14
Connector	FC/APC

Pin	Connection
1	TE Cooler (+)
5	LD Anode (+)
7	PD Cathode (+)
8	PD Anode (-)
9	LD Cathode (-)
11	Thermistor
12	Thermistor
14	TE Cooler (-)



BOTTOM VIEW

Operator	RL
Date	