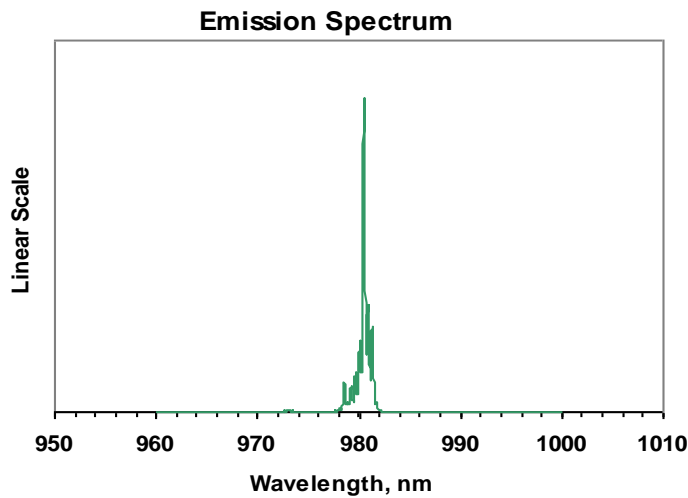
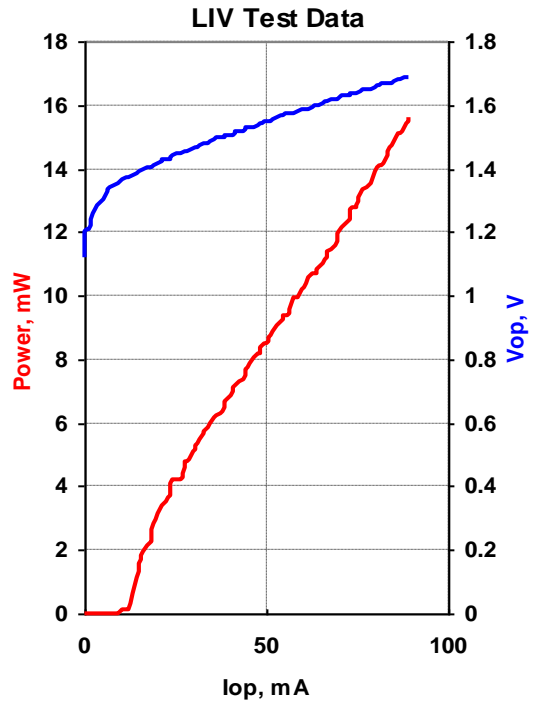




MODEL	QFLD-980-10SAX
PART NUMBER	SAMPLE

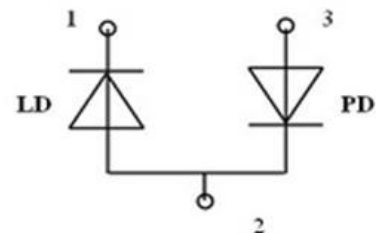
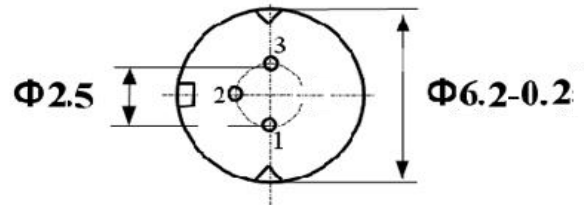
Parameter	Value	Units
Case Temperature	25	°C
Optical Output Power	10.2	mW
Threshold Current	12	mA
Operating Current	59	mA
<b>Maximum Operating Current</b>	<b>65</b>	<b>mA</b>
Operating Voltage	1.58	V
Monitor Current	0.36	mA
Center Wavelength	980.4	nm
Spectral Width	1.04	nm



Fiber Type	HI1060
NA	0.14
Connector	Optional

**NOTE**  
 This type of laser diodes must be used with temperature controlled mount.

Pin	Connection
1	LD Cathode
2	LD Anode, PD Cathode
3	PD Anode



**BOTTOM VIEW**

Operator	NA
Date	xx/xx/20xx