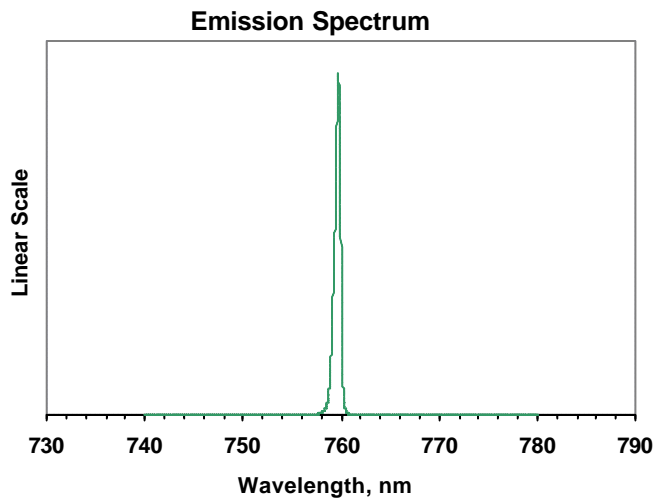
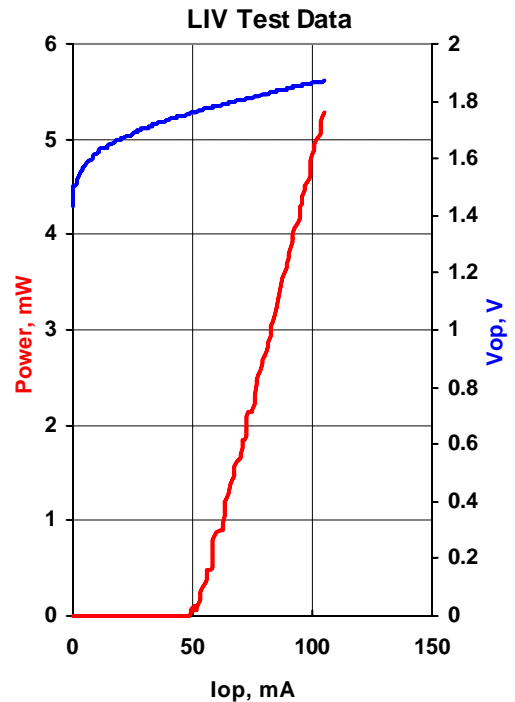




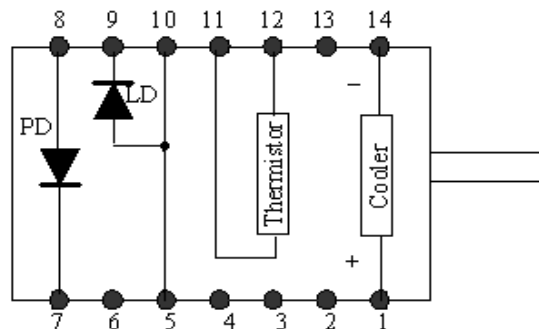
MODEL	QFLD-760-3S
PART NUMBER	09.06.14

Parameter	Value	Units
Internal Temperature	25	°C
Thermistor Resistance	10.0	k?
Optical Output Power	3	mW
Threshold Current	50	mA
Operating Current	82	mA
Operating Voltage	1.83	V
Monitor Current	0.11	mA
Monitor Dark Current	0	nA
Center Wavelength	759.7	nm
Spectral Width	0.69	nm



Fiber Type	HI780
NA	0.14
Connector	FC/PC

Pin	Connection
1	TE Cooler (+)
5	LD Anode (+)
7	PD Cathode (+)
8	PD Anode (-)
9	LD Cathode (-)
11	Thermistor
12	Thermistor
14	TE Cooler (-)



Operator	RL
Date	

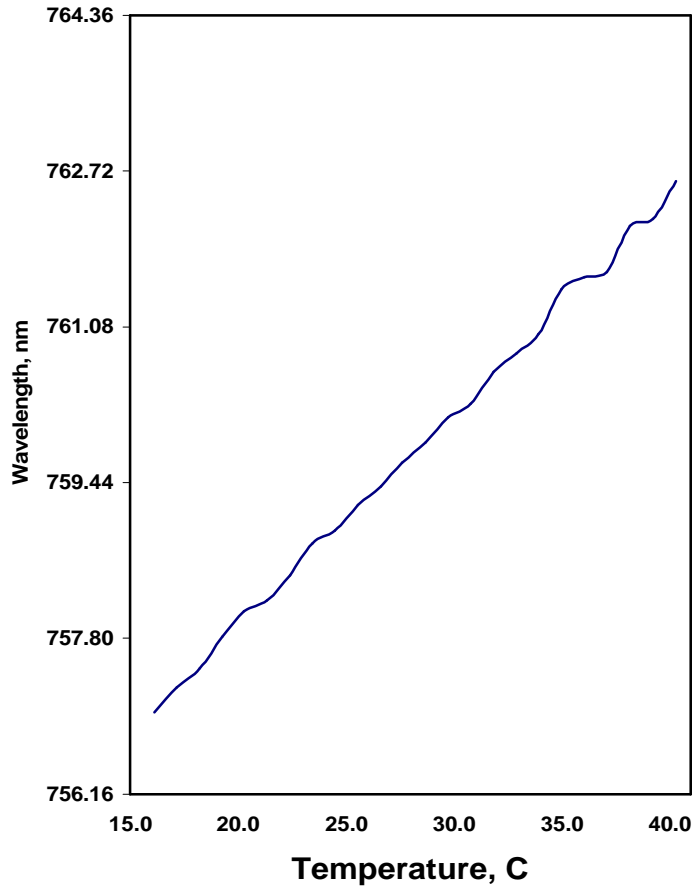


Optical Test Report

MODEL	QFLD-760-3S
PART NUMBER	09.06.14

Operating Current	80	mA
Fiber Type	HI780	
Connector	FC/PC	

Wavelength Vs. Temperature



Temperature(C)	Wavelength(nm)	Resistance(K)
16.13	757.020	14.931
17.18	757.280	14.221
18.23	757.480	13.558
19.28	757.810	12.924
20.31	758.080	12.329
21.37	758.200	11.765
22.42	758.460	11.223
23.44	758.800	10.727
24.51	758.930	10.231
25.57	759.200	9.766
26.62	759.400	9.331
27.64	759.650	8.927
28.72	759.860	8.522
29.74	760.120	8.156
30.80	760.270	7.797
31.87	760.600	7.454
32.91	760.800	7.134
33.96	761.000	6.828
35.00	761.470	6.538
36.07	761.600	6.256
37.10	761.660	5.997
38.19	762.140	5.737
39.26	762.210	5.493
40.32	762.610	5.264

Operator	RL
Date	