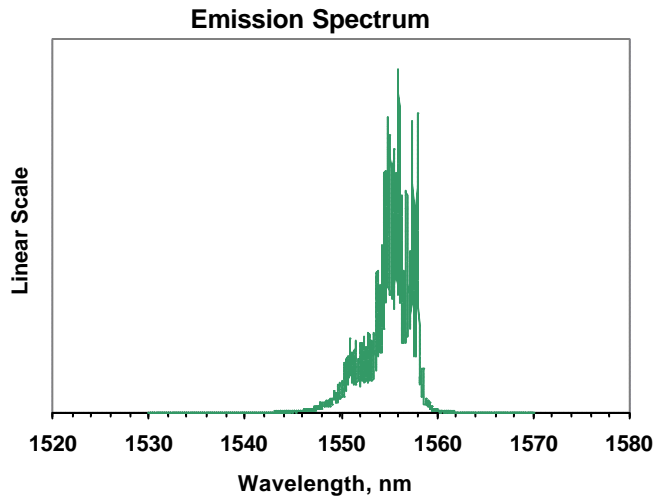
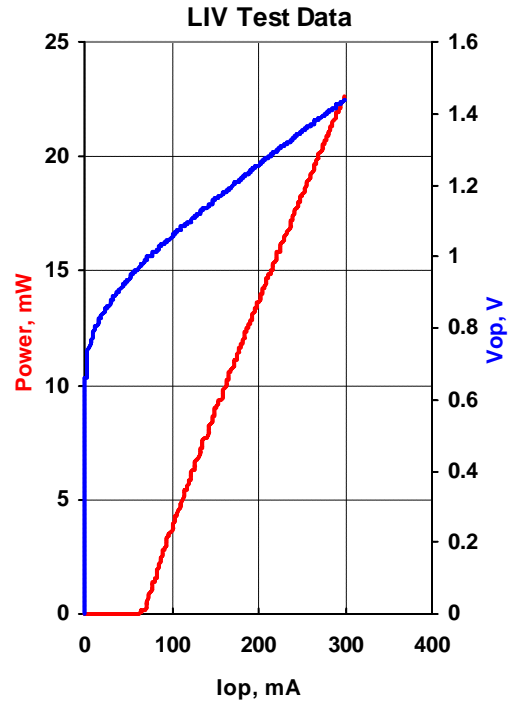




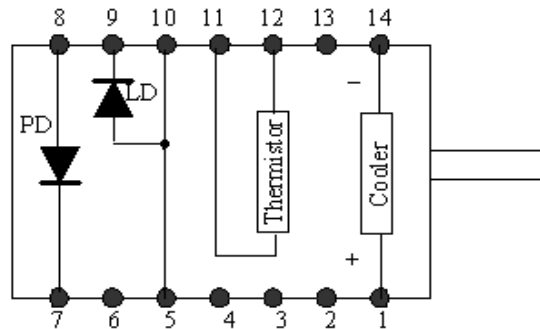
<b>MODEL</b>	QFLD-1550-20S-AR
<b>PART NUMBER</b>	SAMPLE

Parameter	Value	Units
Internal Temperature	25	°C
Thermistor Resistance	10.0	k?
Optical Output Power	20	mW
Threshold Current	74	mA
Operating Current	268	mA
Operating Voltage	1.38	V
Monitor Current	0.04	mA
Monitor Dark Current	0	nA
Center Wavelength	1554.9	nm
Spectral Width	4.55	nm



<b>Fiber Type</b>	SMF28
<b>NA</b>	0.13
<b>Connector</b>	None

Pin	Connection
1	TE Cooler (+)
5,10	LD Anode (+)
7	PD Cathode (+)
8	PD Anode (-)
9	LD Cathode (-)
11	Thermistor
12	Thermistor
14	TE Cooler (-)



<b>Operator</b>	RL
<b>Date</b>	3/31/2009