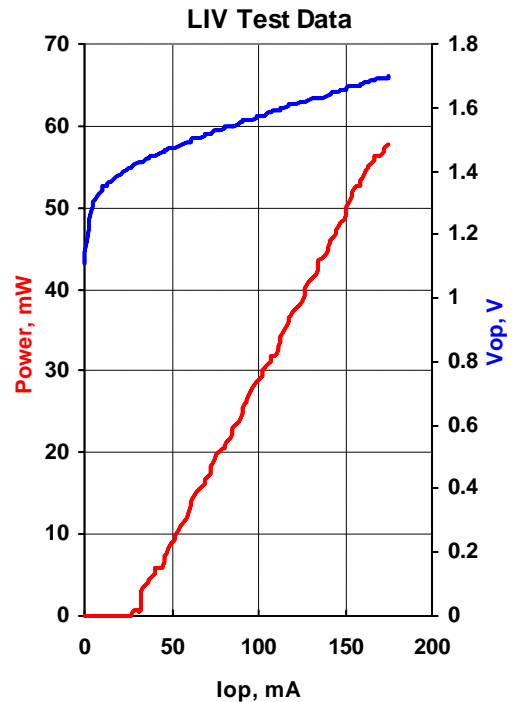


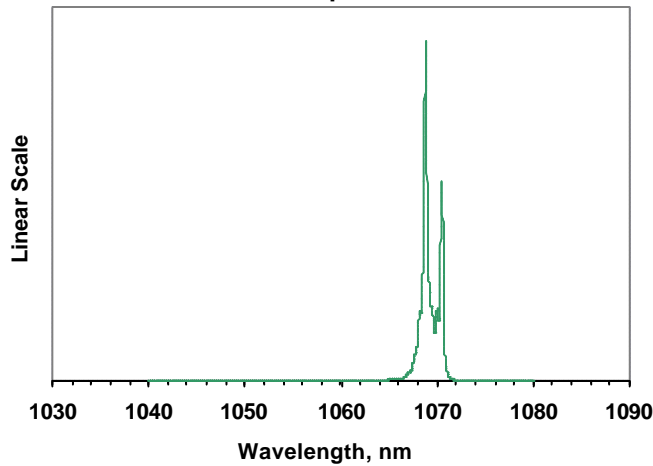


<b>MODEL</b>	QFLD-1060-40S
<b>PART NUMBER</b>	SAMPLE

Parameter	Value	Units
Internal Temperature	25	°C
Thermistor Resistance	10.0	k?
Optical Output Power	40	mW
Threshold Current	36	mA
Operating Current	126	mA
Operating Voltage	1.62	V
Monitor Current	0.46	mA
Monitor Dark Current	0	nA
Center Wavelength	1069.4	nm
Spectral Width	1.8	nm

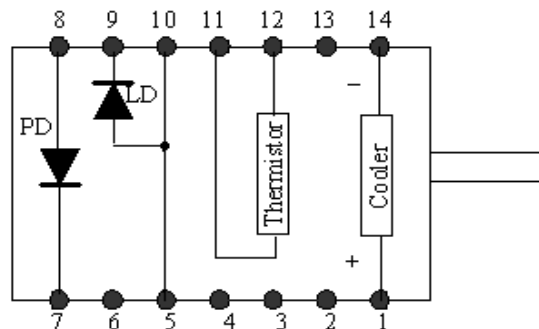


Emission Spectrum



<b>Fiber Type</b>	HI1060
<b>NA</b>	0.14
<b>Connector</b>	

Pin	Connection
1	TE Cooler (+)
5,10	LD Anode (+)
7	PD Cathode (+)
8	PD Anode (-)
9	LD Cathode (-)
11	Thermistor
12	Thermistor
14	TE Cooler (-)



BOTTOM VIEW

<b>Operator</b>	
<b>Date</b>	