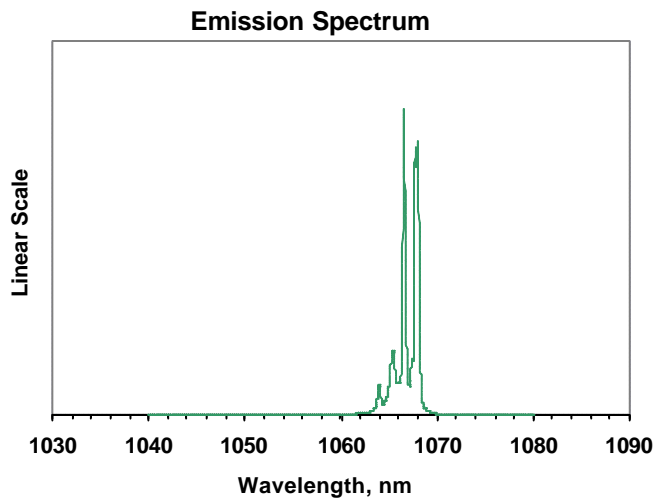
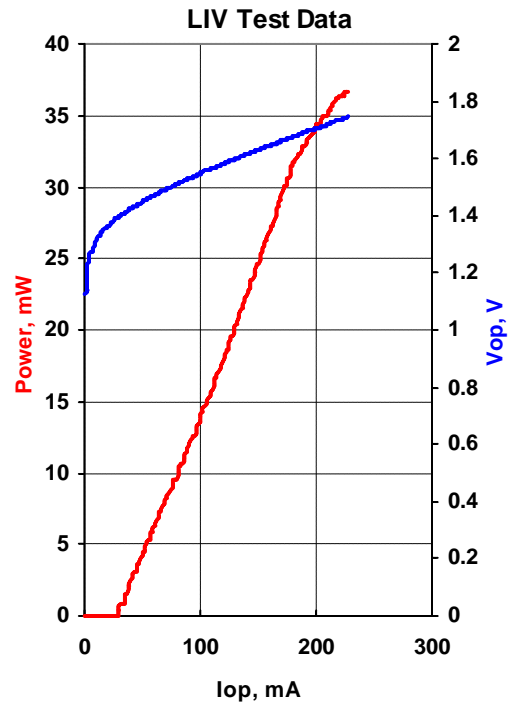




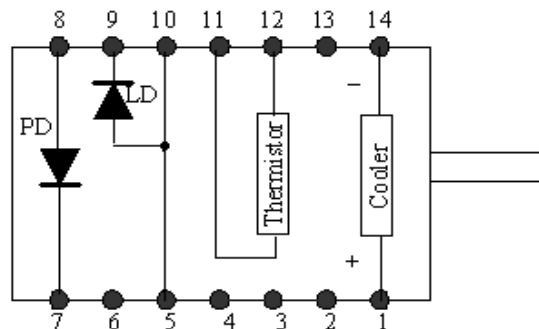
MODEL	QFLD-1060-30S-AR
PART NUMBER	SAMPLE

Parameter	Value	Units
Internal Temperature	25	°C
Thermistor Resistance	10.0	k?
Optical Output Power	30.1	mW
Threshold Current	36	mA
Operating Current	172	mA
Operating Voltage	1.66	V
Monitor Current	0.14	mA
Monitor Dark Current	0	nA
Center Wavelength	1066.9	nm
Spectral Width	2.32	nm



Fiber Type	HI1060
NA	0.14
Connector	None

Pin	Connection
1	TE Cooler (+)
5,10	LD Anode (+)
7	PD Cathode (+)
8	PD Anode (-)
9	LD Cathode (-)
11	Thermistor
12	Thermistor
14	TE Cooler (-)



Operator	
Date	