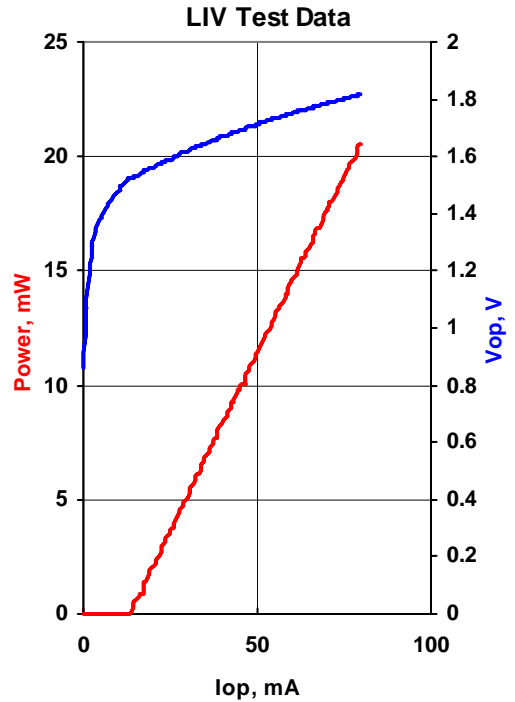


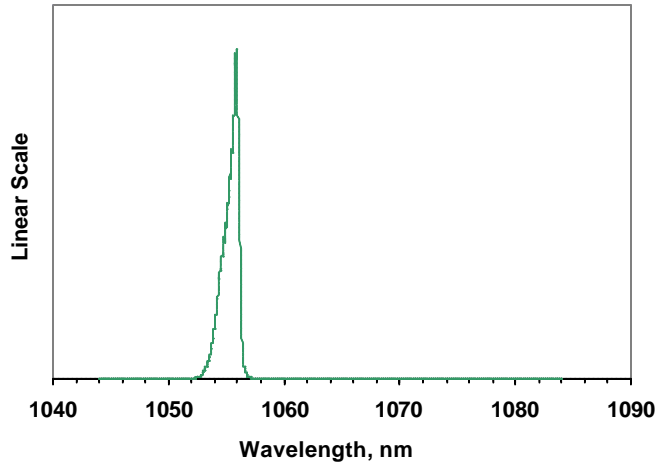


MODEL	QFLD-1064-10SAX
PART NUMBER	SAMPLE

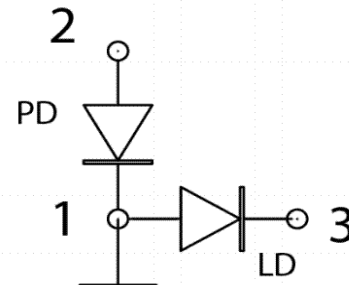
Parameter	Value	Units
Internal Temperature	25	°C
Thermistor Resistance	10.0	k?
Optical Output Power	10.1	mW
Threshold Current	14	mA
Operating Current	45	mA
Maximum Operating Current	50	mA
Operating Voltage	1.69	V
Monitor Current	0.05	mA
Center Wavelength	1055.3	nm
Spectral Width	1.11	nm



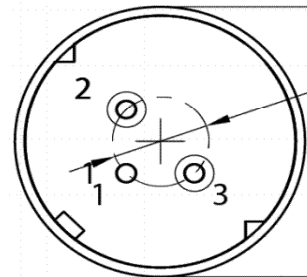
Emission Spectrum



Fiber Type	HI1060
NA	0.14
Connector	FC/PC



Pin	Connection
1	LD Anode, PD Cathode
2	PD Anode
3	LD Cathode



Operator	
Date	

BOTTOM VIEW