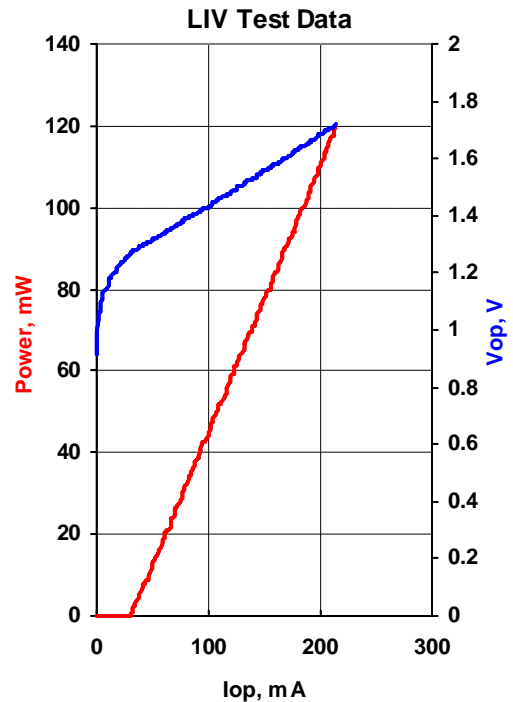


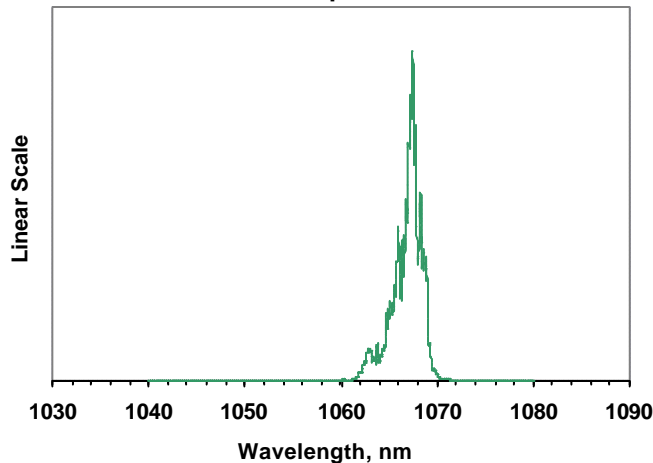


<b>MODEL</b>	QFLD-1060-100S
<b>PART NUMBER</b>	Sample

Parameter	Value	Units
Internal Temperature	25	°C
Thermistor Resistance	10.0	k?
Optical Output Power	100	mW
Threshold Current	34	mA
Operating Current	184	mA
Operating Voltage	1.64	V
Monitor Current	0.09	mA
Monitor Dark Current	0	nA
Center Wavelength	1067.1	nm
Spectral Width	3.08	nm

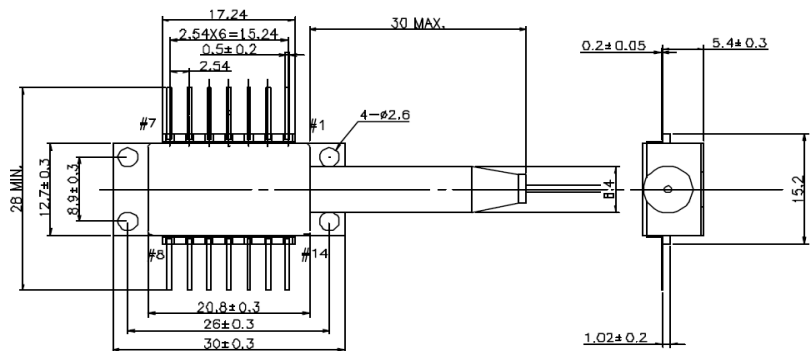


**Emission Spectrum**



<b>Fiber Type</b>	HI1060
<b>NA</b>	0.14
<b>Connector</b>	FC/PC

Pin	Connection
1	TE Cooler (+)
2	Thermistor
3	PD Anode (-)
4	PD Cathode (+)
5	Thermistor
10	LD Anode (+)
11	LD Cathode (-)
14	TE Cooler (-)



<b>Operator</b>	
<b>Date</b>	



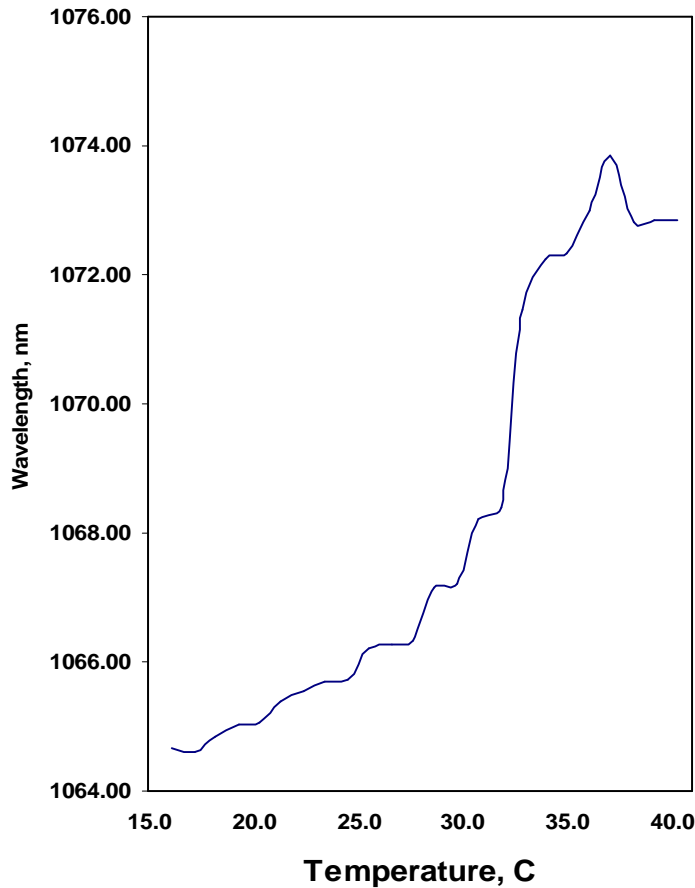
# QPHOTONICS, LLC

3830 Packard Road, Phone: 734-477-0133  
 Suite 280, Fax: 734-477-0166  
 Ann Arbor, MI 48108, Email: info@qphotonics.com  
 USA http://www.qphotonics.com

## Optional Test Report

<b>MODEL</b>	<b>QFLD-1060-150S</b>	
<b>PART NUMBER</b>	<b>SP3D11</b>	
<b>Operating Current</b>	<b>180</b>	mA
<b>Fiber Type</b>	HI1060	
<b>Connector</b>	FC/PC	

### Wavelength Vs. Temperature



Temperature(C)	Wavelength(nm)	Resistance(K)
16.12	1064.680	14.939
17.16	1064.600	14.237
18.22	1064.860	13.565
19.27	1065.020	12.932
20.31	1065.060	12.337
21.35	1065.380	11.772
22.41	1065.560	11.231
23.44	1065.700	10.727
24.51	1065.720	10.231
25.57	1066.220	9.766
26.62	1066.260	9.331
27.64	1066.340	8.927
28.70	1067.160	8.53
29.74	1067.220	8.156
30.80	1068.200	7.797
31.84	1068.400	7.462
32.91	1071.460	7.134
33.98	1072.240	6.821
35.00	1072.320	6.538
36.07	1073.000	6.256
37.10	1073.860	5.997
38.16	1072.820	5.745
39.23	1072.800	5.501
40.28	1072.860	5.272

<b>Operator</b>	
<b>Date</b>	