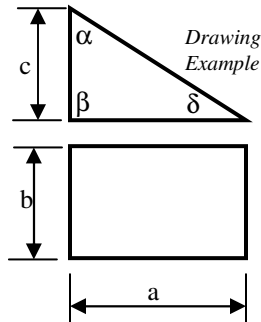
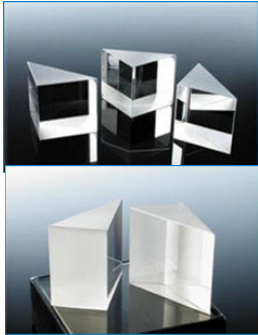


OPTICAL PRISM - PRM Series

- Selectable Materials(per Spectrum and Index)
- Standard or Custom Design(with no Extra Charge)
- With coating or Without Coating

PHOTONIK^{hv}

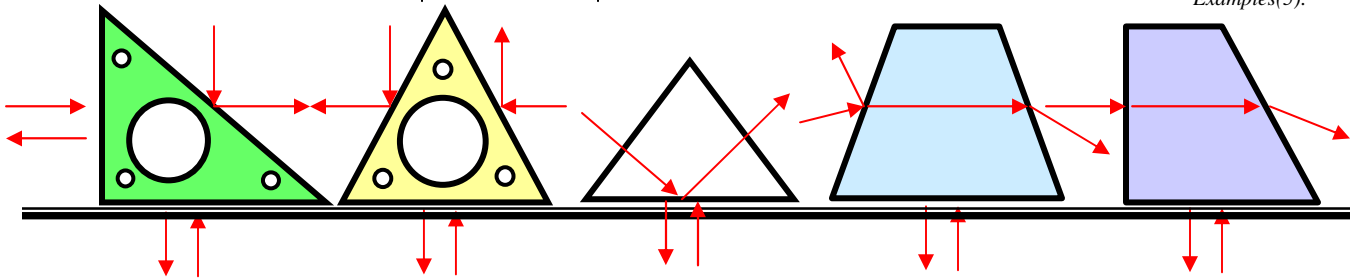
PHOTONIK SPECTRUM WORLD



APPLICATIONS:

- Light dispersion;
- Imaging component;
- Beam shaping components(e.g. anamorphic prism);
- Beam splitting use;
- Laser cavity coupling mirrors;
- Beam coupling, etc.

Application Examples(5):



Ordering Information:

Typical Materials:

BK7 glass, UV fused silica, Zerodour®, Sapphire(Al_2O_3), SF11, SF14, ZnSe, YAG, ZnS, CaF_2 , CsI, GaAs, Ge, Si, etc. or per user specified.

Dimension:

a: user specified;
b: user specified;
c: user specified;
 α : user specified;

Angle:

User may specify any angle if not right angled.

Tolerance:

$\pm 0.1\text{mm}$ (a/b/c) typ; $\pm 10''$ (angle); or per special request.
 $\pm 30''$ typ.(angle: $\alpha/\beta/\delta$ or right angle; $\pm 5''$ per request)

Surface Polish Requirement:

Per specified or provided drawing;

Surface Quality(fine polished):

40 - 20 Scratch-Dig(MIL standard);

Surface Flatness:

10 - 05 Scratch-Dig per request.

$\lambda/2$ @ 633nm per 25mm typ;

$\lambda/10$ @ 633nm per request;

$\lambda/20$ @ 633nm per 25mm achievable per special request.

Coating(Optical Surface)

1: No coating required;

2: Enhanced Aluminum coating;

3: Protected Silver coating

4: Protected Gold coating

5: Dielectric coating per user's application.

In-Prism Hole-Drilling Requirement:

Per specified or provided drawing;

Fixtures/Accessories for Prism/Edge:

Per specified or provided drawing;

Contact Information:

PHOTONIK (SINGAPORE) PTE LTD

8 Boon Lay Way, TradeHub 21, #04-04, Singapore 609964
Tel: +65-6316-6370, +65-6316-2142 Fax: +65-6316-1082
Email: sales@photonik.com.sg Web: www.photonik.com.sg

Kokyo

株式会社 光響
〒600-8411

京都市下京区烏丸通四条下ル水銀屋町637番地 第5長谷ビル2階
E-mail: info@symphotonik.com