

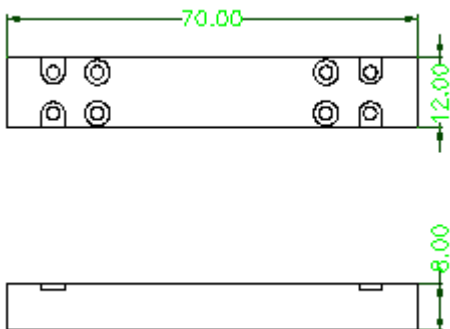
Nx1 Multimode Fiber Combiner

Features	
High Coupling Efficiency High Power High stability and reliability	
Application	
Fiber Laser	

Specification

Port Type	Working Wavelength (nm)	Input pump	Output fiber	Pump Efficiency	Package
				Spec	
2x1	800-1000	105/125 0.15	105/125 0.22	≥85%	3X54 70X12X8
3x1		105/125 0.15	200/220 0.22	≥93%	
3x1		105/125 0.22	125 0.46	≥93%	
3x1		105/125 0.22	200/220 0.22	≥90%	
3x1		105/125 0.22	200/220 0.22	≥88%	
4x1		105/125 0.22	125 0.46	≥90%	
7x1		105/125 0.22	125 0.46	≥90%	
7x1		105/125 0.15	220/242 0.22	≥90%	
7x1		105/125 0.22	200 0.46	≥90%	
7x1		105/125 0.22	400/440 0.22	≥90%	
7x1		105/125 0.22	20/400 0.06/0.46	≥90%	

Package Dimensions



Ordering Information

MPC	Port Type	Pump fiber	Output fiber	Length	Package
	2x1 3x1 4x1 7x1	XX:specify	XX:specify	0.8=0.8m 1=1m	3x54 70x12x8