

C0 Specification

TV SYSTEM	NTSC	PAL
IMAGE SENSOR	1/4-INCH I.L. CCD IMAGE SENSOR	
CCD TOTAL PIXELS	~ 370K	~ 430K
SYNC SYSTEM	INTERNAL	
SCANNING SYSTEM	525 LINES ,60 FIELDS/SEC	625 LINES ,50 FIELDS/SEC
MINIMUM ILLUMINATION	1.5 LUX@F1.2 AGC ON	
LENS & VIEW ANGLE	3.6MM F2.0 / 68° (option:2.2,2.5,3.0,4.0,6,8,0,12.0)	
RESOLUTION	470 TVL/580 TVL (ENHANCED)	
WHITE BALANCE	Auto high speed white balance	
WHITE BALANCE RANGE	3200 ~ 15000 °K	
S / N RATIO	52DB (MIN) / 60DB (TYP) (AGC OFF)	
GAIN CONTROL	AGC	
MIRROR FUNTION	ON / OFF SWITCHABLE	
AUTO IRIS	A.E.S.	
GAMMA CORRECTION	0.45	
GAIN CONTROL	AGC	
ELECTRONIC SHUTTER	1/60~1/120,000 SEC.	1/50~1/120,000 SEC.
VIDEO OUTPUT	1.0V P-P COMPOSITE VIDEO AT 75 ohm	
OPERATION TEMPERATURE	-20°C TO 50°C	
OPERATIONAL HUMIDITY	WITHIN 85% RH	
POWER SUPPLY	DC12V±1V / 65MA	

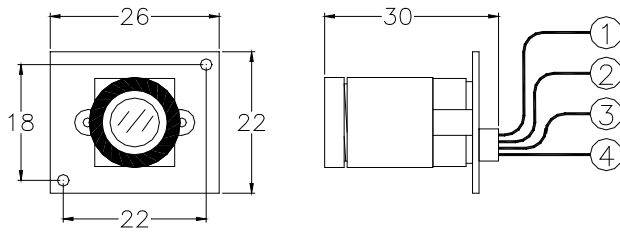
Caution for Installation:

1. The camera are only operated with regulative adaptor DC 12V.
2. AC to DC non-regulative adaptor may cause camera damaged.

Model No. C0 企_VER 1.0

Model number 54C0

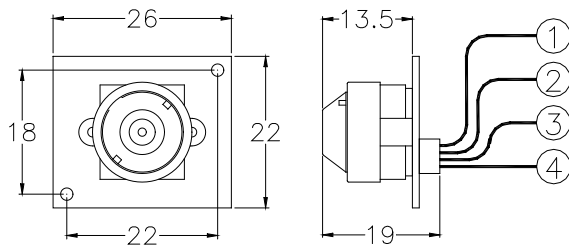
Dimension (Unit : mm / ±0.5mm)



Item No. MTV-54C0H-EX

- CVBS(PAL/NTSC)
- Board Lens
- 22x26
-

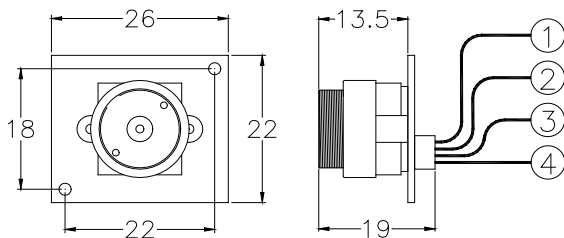
Features : C0 common functions



Item No. MTV-54C0HI (Cone)

- CVBS(PAL/NTSC)
- Pinhole Lens [\(Cone\)](#)
- 22x26

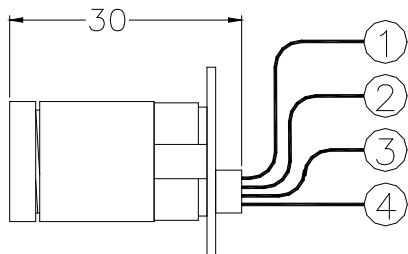
Features : C0 common functions



Item No. MTV-54C0HI

- CVBS(PAL/NTSC)
- Pinhole Lens
- 22x26

Features : C0 common functions



P1	RED	+12V DC-POWER INPUT
P2	BLACK	GND
P3	WHITE	VIDEO OUTPUT
P4	YELLOW	MIRROR SELECTOR OPEN-NORMAL GND- MIRROR

"Warning!!! P4 (Mirror pin)

Open or connect to GND only. Shall never connect to +12V, damage will be occurred.