

Kokyo

株式会社 光響

京都市下京区烏丸通四条下ル水銀屋町637番地 第5長谷ビル2階

E-mail : info@symphotony.com

TEL : 070-6582-2430

URL : <https://www.symphotony.com/> FAX : 075-320-1604



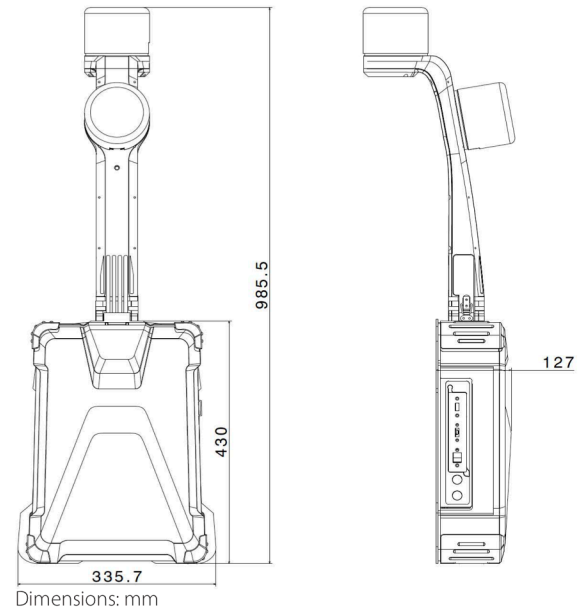
LiBackpack D50

Mobile Handheld 3D Mapping System

LiBackpack D50

Mobile Handheld 3D Mapping System

LiBackpack D50 is GVI's premium mobile laser scanning system. Powered by two Velodyne VLP-16 sensors and GVI's proprietary algorithms, the D50 provides superior SLAM performance, wider effective FOV (Field of View) and longer practical detection range. All of this is contained in a durable, lightweight housing, allowing users to scan vast areas for up to two hours.



Real-Time Data Visualization

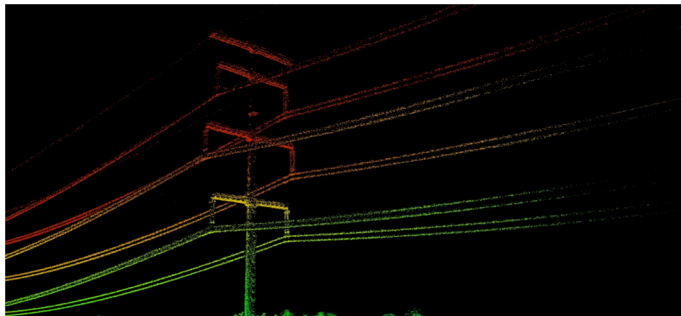
Visualize the point cloud in real-time via the connected device (wired/wireless). The LiBackpack user interface also displays device status information.

Expanded Field of View

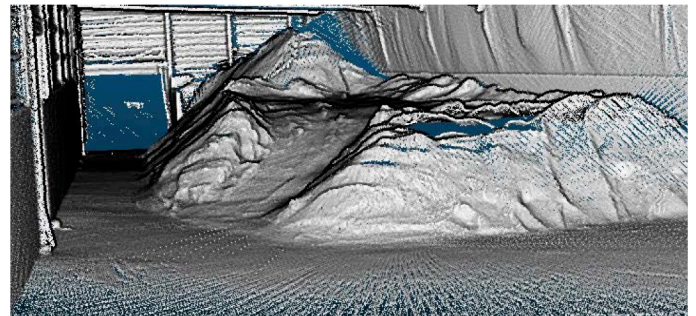
Dual Velodyne VLP-16 laser sensors offer an expanded field of view (FOV) with up to twice as many points.

Robust SLAM Solution

More robust SLAM technologies due to the inclusion of twice as many data points (compared to the LiBackpack 50).



Scan power lines and analyze potential vegetation hazards



Obtain mining stockpile volumetric information

Specifications

Laser Sensor	Velodyne VLP-16*2
LiDAR Accuracy	±3 cm
Scan Range	100 m
Data Accuracy	~5cm
Operation & Data Transfer	WiFi connection (mobile phone, tablet) Wired Ethernet connection (tablet)
Onboard Storage	512 GB
Ports Available	HDMI, Ethernet & USB
Operation Time	~2 hour w/ DJI TB47S battery

Weight	8.8kg without battery
Dimensions	985.5*335.7*127 mm
Typical Ground Speed	1 m/s
Max. Power Consumption	65 w
WiFi Band	2.4 GHz
Scan Rate	600 kHz
Vertical FOV	-90° to +90°
Horizontal FOV	360°
Display	UI via mobile device