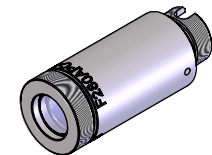
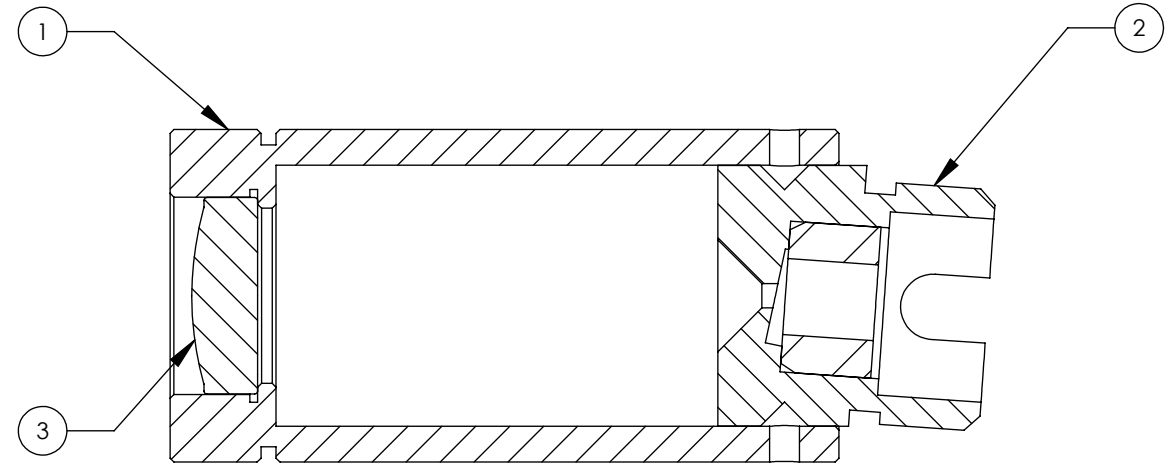
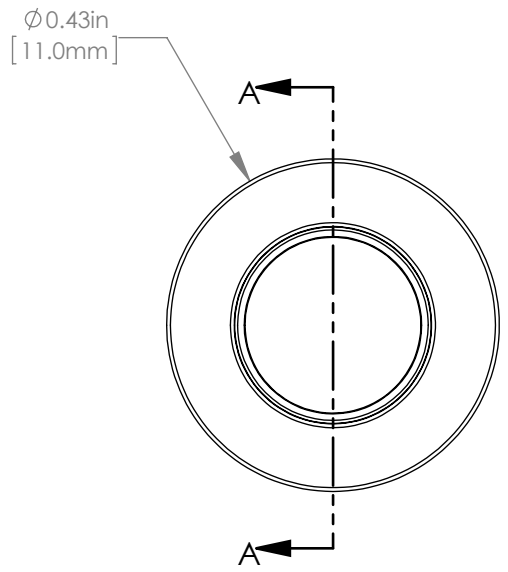
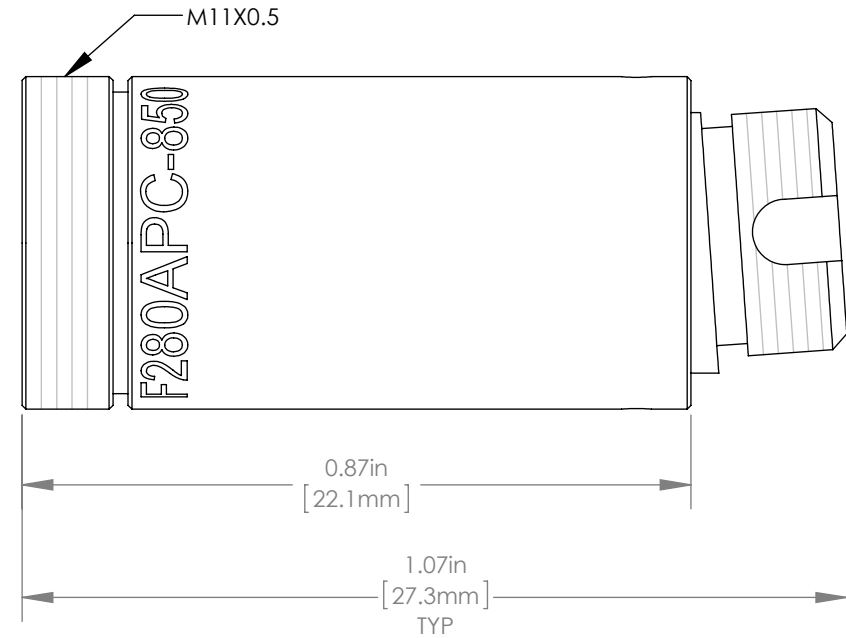


	ITEM	MATERIAL
①	HOUSING	303 STAINLESS STEEL
②	FC/APC PLUG ADAPTER	303 STAINLESS STEEL
③	∅6.5mm, f=18.45 mm LENS	MOLDED ASPHERE



SPECIFICATIONS

DESIGN WAVELENGTH	850 nm
DESIGN MFD	5.0 μm
OUTPUT 1/e ² BEAM DIAMETER	3.99 mm
FULL ANGLE BEAM DIVERGENCE	0.02° ^{+0.01} / _{-0.00}
AR COATING	Ravg<0.5% FROM 650-1050 nm



SECTION A-A



株式会社光響
 Email : info@symphotony.com
 Web : https://www.symphotony.com/

THORLABS FIBER COLLIMATION PACKAGES ARE DESIGNED TO COLLIMATE A LASER BEAM PROPAGATING OUT THE END OF AN OPTICAL FIBER. EACH COLLIMATION PACKAGE IS FACTORY ALIGNED SO THAT THE BEST POSSIBLE DIVERGENCE IS ACHIEVED.

FOR INFORMATION ONLY
 NOT FOR MANUFACTURING PURPOSES

DRAWING PROJECTION		⊕	≡
	NAME	DATE	
DRAWN	ST	13/JAN/16	
APPROVAL	NE	10/FEB/16	
COPYRIGHT © 2016 BY THORLABS			
VALUES IN PARENTHESIS ARE CALCULATED AND MAY CONTAIN ROUND OFF ERRORS			

THORLABS	
www.thorlabs.com	
λ=850 nm FC/APC COLLIMATION PACKAGE, NA=0.15, f=18.45 mm	
MATERIAL	SEE TABLE
ITEM #	F280APC-850
APPROX WEIGHT	10.0 g

REV A