

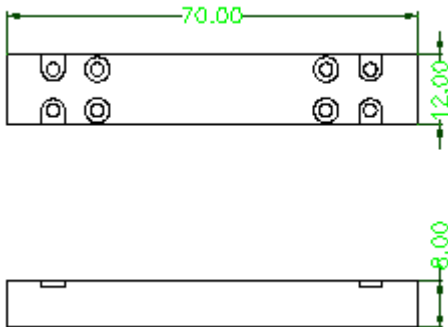
## (2+1)x1 Multimode Fiber Combiner

<b>Features</b>	
High Coupling Efficiency & Low Insertion Loss High Power High stability and reliability	
<b>Application</b>	
Fiber Laser High Power Amplifier	

### Specification

Working WL (nm)	Input pump	Input signal	Output fiber	Signal IL Spec	Pump Effi. spec	Package	Power
1060	105/125 0.22	6/125 0.14/0.46	6/125 0.14/0.46	0.5dB	90%	70x12x8 or 3x60	20W/p er pump port
1550	105/125 0.22	8/125 0.14/0.46	8/125 0.14/0.46	0.5dB	90%		
1060	105/125 0.22	10/125 DCF	10/125 DCF	0.5dB	90%		
1060	105/125 0.22	20/125 DCF	20/125 DCF	0.5dB	90%		

### Package Dimensions



### Ordering Information

MPC	Port Type	Pump fiber	Signal fiber	Output fiber	Length	Package
	(2+1)x1	105/125 0.22	6/125 DC 20/125 DC 10/125 DC	6/125 DC 20/125 DC 10/125 DC	0.8=0.8m 1=1m	70x12x8 3x60