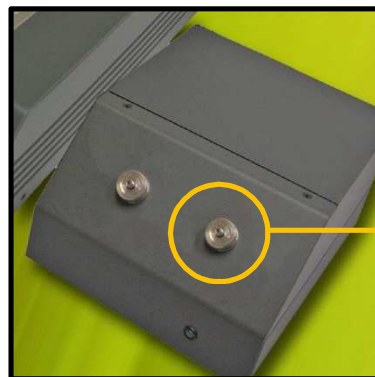
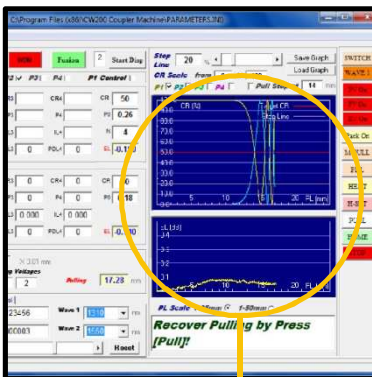
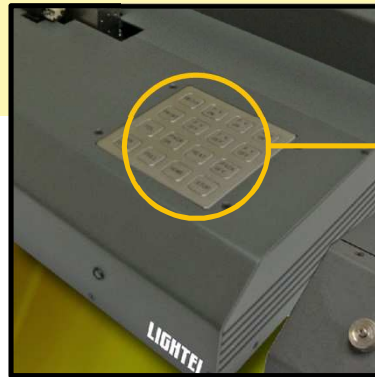
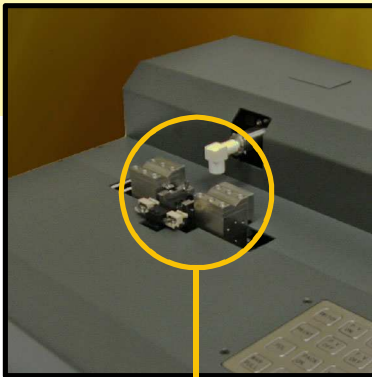


The Industry Workhorse for Producing FBT Couplers

LIGHTEL's CW-200B has proven to be well-suited for the mass production of Fused Biconic Taper (FBT) products. Its small footprint allows for efficient use of space, and years of low-maintenance use in numerous environments have made it a popular manufacturing solution for:

- Single-mode 1x2 or 2x2 couplers, single or dual window (1% to 50%)
- Single-mode 1x3 single or dual window
- Single-mode ultra flat 50/50 splitter, 1310 +/-50nm or 1550 +/-75nm
- Single-mode WDM: 1310/1550, 980/1550, 1480/1550, 1550/1625, etc.
- Multimode single-fuse splitter: 1x2, 1x3, 2x2



Features

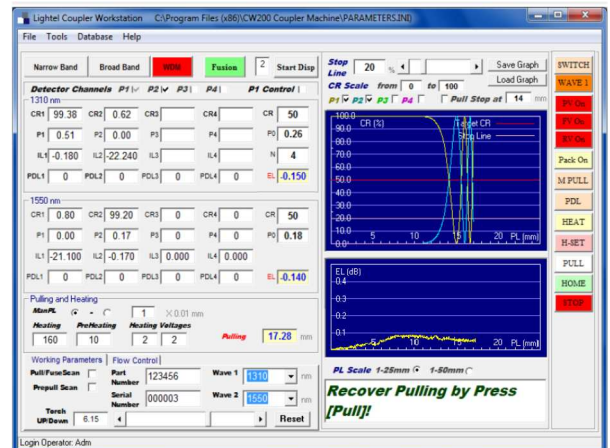
- Control panel provides easy regulation of 15 frequent actions
- High precision pulling stage
- High precision digital power meter
- Real-time graphic display for coupling ratio and excess loss monitoring

➔ Other Features and Applications

- 6 axes motion controller
- Vacuum packaging stage
- External wavelength switch (optional)
- Standard 3D torch system for hydrogen flame, with additional oxygen diffuser option

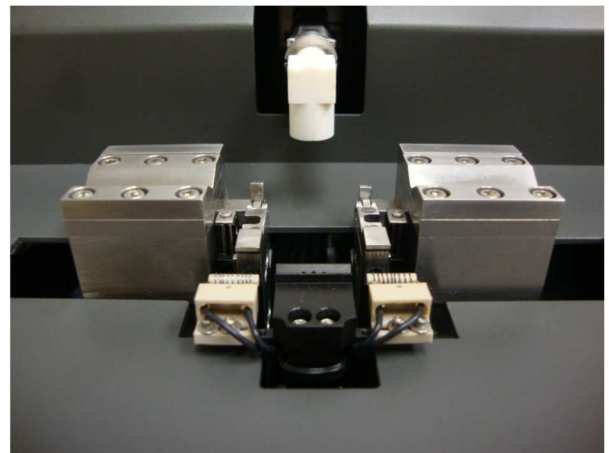
➔ Software Features

- Straightforward GUI interface for easy setting, monitoring, and control under different fusion modes
- Database management and networking capability
- Automatically records process and product data for production management and yield/cost analysis
- Easy retrieval of records from the database through date, part number, product type or operator ID
- Windows®-based software with modest hardware requirements



➔ Parallel Fusion Option

- This option greatly reduces the fiber stripping length, allowing the production of compact-size couplers
- Enables special techniques to allow manufacture of ultra-low PDL (Polarization Dependent Loss) couplers
- Bare fiber clamps are selectable from 80mm to 200mm (or custom size)
- Easy system expansion to handle up to 3 fibers



➔ Specifications

Dimensions: 21.65" x 16" x 9.65" (550 x 405 x 245mm)
Weight: 70lb (31.5kg) approx.
Power: 100-240V, 50/60Hz, 150Watt

Kokyo

株式会社 光響

Email : info@symphotony.com
Web : <https://www.symphotony.com/>